



Great Lakes Advisory Board (GLAB) March 30 and 31, 2021.

Day 2

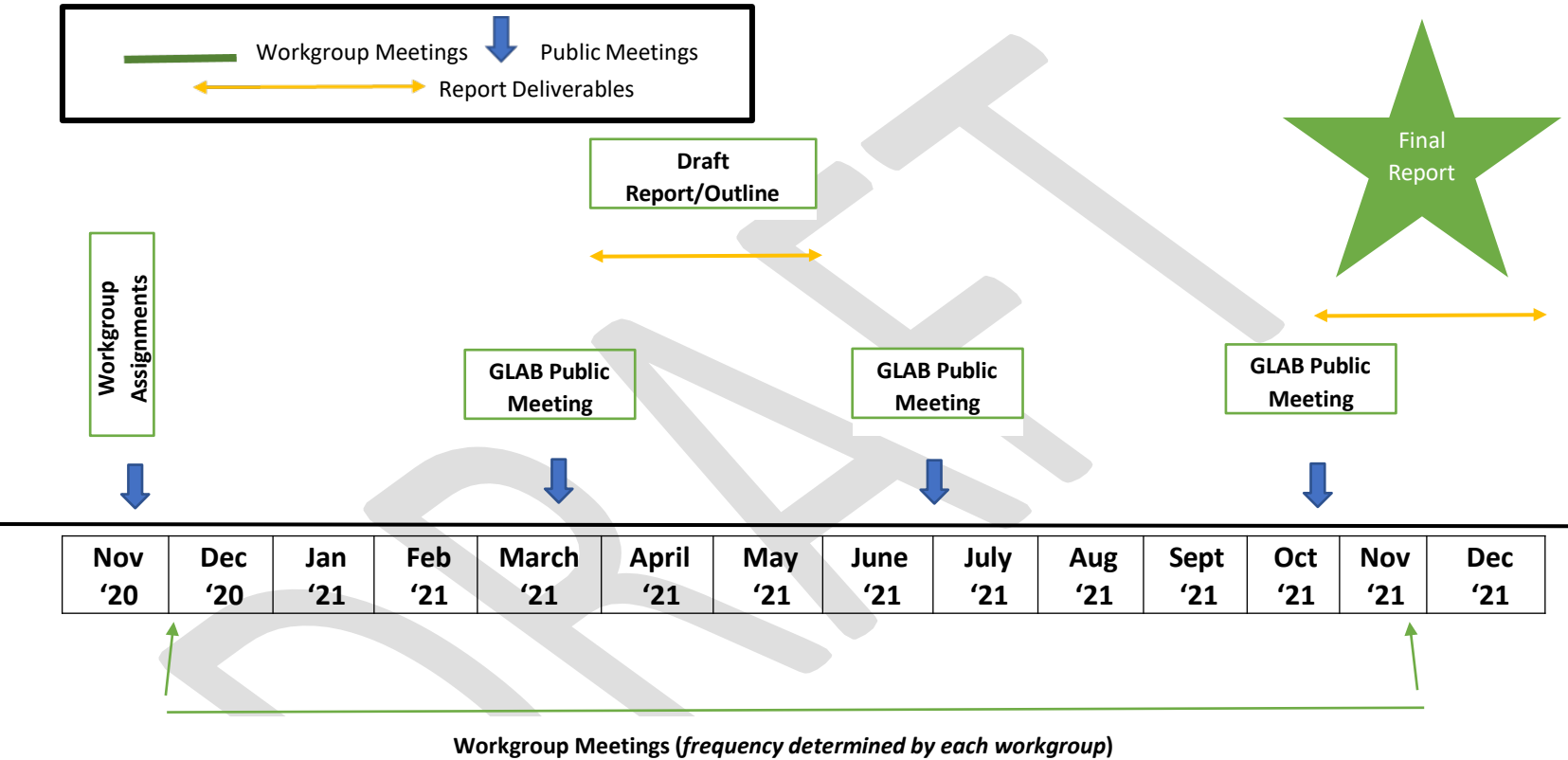
Current GLAB Members

- **Co-Chair: Stephen Galarneau**, Director of the Office of Great Waters – Great Lakes & Mississippi River, Wisconsin Department of Natural Resources
- **Co-Chair: Kyle Dreyfuss-Wells**, Chief Executive Officer, Northeast Ohio Regional Sewer District
- **Scudder Mackey**, Chief of the Office of Coastal Management, Ohio Department of Natural Resources
- **James Williams Jr.**, Tribal Chairman, Lac Vieux Desert Band of Lake Superior Chippewa Indians
- **Jeff Stollenwerk**, Director of Government and Environmental Affairs, Duluth Seaway Port Authority
- **John Hull**, Founder and Chairman, Hull & Associates Inc.
- **Lisa Frede**, Director of Regulatory Affairs, Chemical Industry Council of Illinois
- **Larry Antosch**, Senior Director, Ohio Farm Bureau Federation
- **Kay Nelson**, Director of Environmental Affairs, Northwest Indiana Forum
- **J. Val Klump**, Dean and Professor of the School of Freshwater Sciences, University of Wisconsin - Milwaukee
- **Alan Steinman**, Director of Annis Water Resources Institute, Grand Valley State University
- **Brian Miller**, Retired, Illinois-Indiana Sea Grant and Illinois Water Resources Center
- **Sylvia Orduño**, Organizer, Michigan Welfare Rights Organization

Recap of Day 1

- Recommendations will range from **tangible/immediately actionable** items, to actions that will take **additional coordination beyond the GLAB**, and finally workgroups will also provide thoughts and guidance that are **directional and set longer term agendas and actions** for the Agency.
- GLAB Nutrients Workgroup
- GLAB Invasive Species Workgroup
- Public Comments

Great Lakes Advisory Board Timeline 2020-2021 Timeline of Work (Draft Version 12/08/2020)





GLRI Workgroup

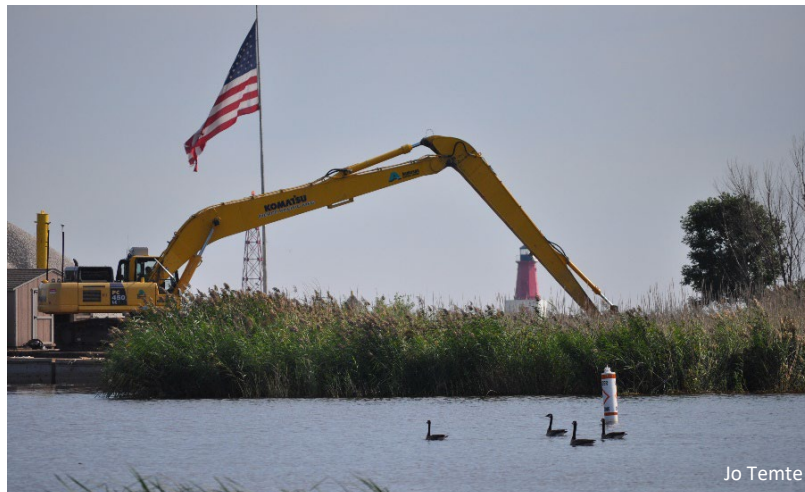
Members:

- Chairman James Williams
- Sylvia Orduño
- John Hull
- Dr. Val Klump
- Kay Nelson
- Steve Galarneau

GLAB Meeting March 30-31, 2021

Great Lakes Restoration Initiative

- Three GLRI Charge Questions – 3, 5 & 6
- C3 – Communication
 - Goals, Challenges, Accomplishments of GLRI
 - Stakeholders' communication
 - Who are we missing?
 - How do we communicate better?
 - Improve outreach





GLRI Charge Questions – 3, 5 & 6

C5 – Going forward, Appropriate:

- Annual Ecological outcomes
 - Baseline data
 - Metrics / Monitoring data
 - Return on Investment

AND

- Community-based outcomes
 - Baseline data
 - Metrics / Monitoring data
 - Return on Investment
- AOCs, Habitat Restoration and Protection
- Invasive Species, Nutrients



C6 – GLRI Leveraging across Federal Agencies and Programs

- Maximize Environmental **AND** Economic benefits to Communities

Workgroup Approach

The workgroup recognizes that this is a game-changer

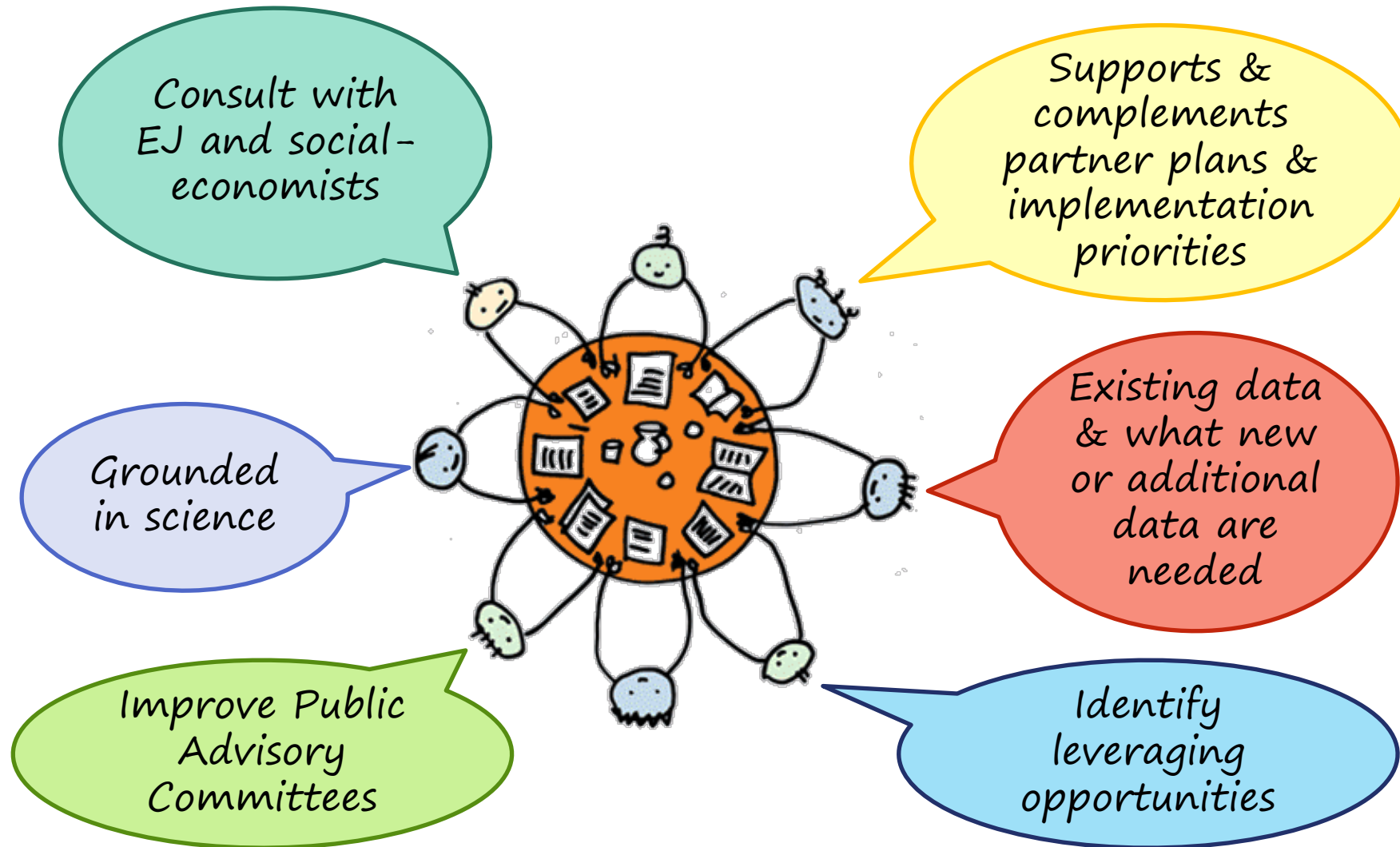
GLRI through an Environmental – Social – Economic lens

Communication –

- We have a current approach for identifying environmental projects and funding.
 - How do we improve our communication?
- Identify approaches for how we factor in socio-economic benefits/end points into GLRI projects and funding.
- Identify approaches for better outreach that capture environment-social-economic engagement, outcomes, metrics, data and reporting.



Some Examples for Better Outreach



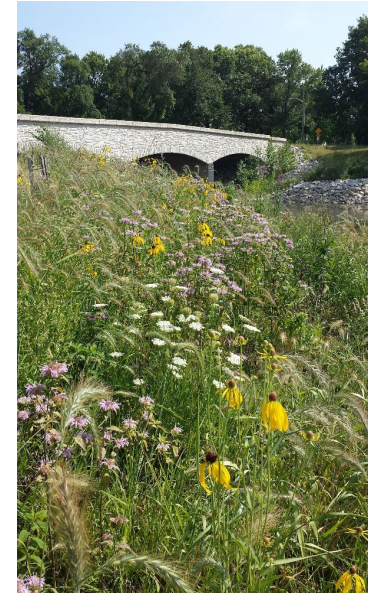
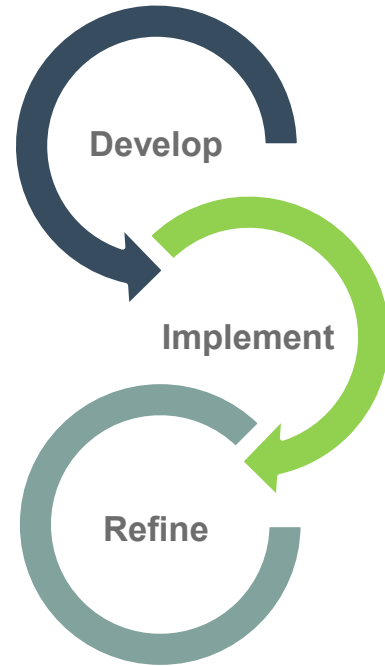
Issues / Challenges

- Potential Evolution of GLRI - Restoration and Environmental endpoints to Environmental-Social-Economic conditions.
- Status of GLRI Action Plan 3 evolve to something else?
- Start time for GLRI AP4?
- How do we leverage funds to achieve the social-economic endpoints?
- GLRI has finite resources, some projects are very complex and expensive e.g. contaminated sediment clean-ups and nutrient reductions (Harmful Algal Blooms).
- Assure that we have a complete voice being heard – urban and rural communities
- Value protection and not just restoration. Great Lakes **Management** Initiative?
- Communicate and manage expectations
 - Timeframes, Cost, Deliverables, Resources – people
- Cabinet Level position for Water as we do for Energy?

How do we capture the necessary environmental data, social data and economic data and into a cogent GLRI story?



GLRI Workgroup Discussion



Implement Projects with the Community





Public Comments

13

Next Steps

